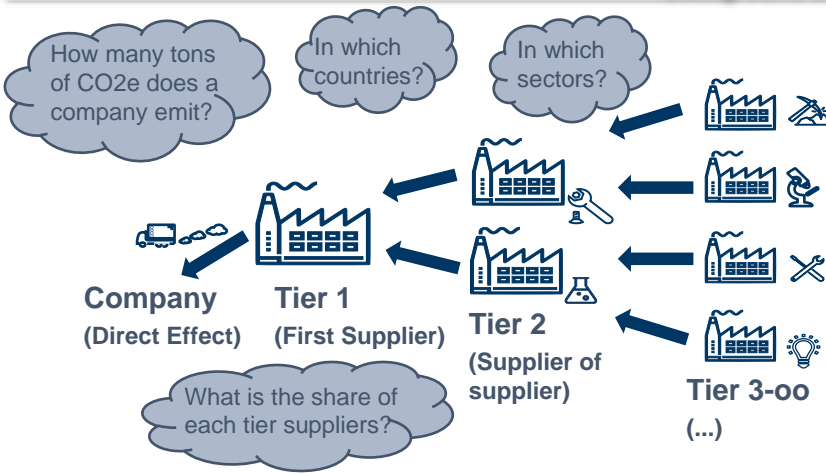


A procurement tool for streamlined Input-Output sustainability Assessment

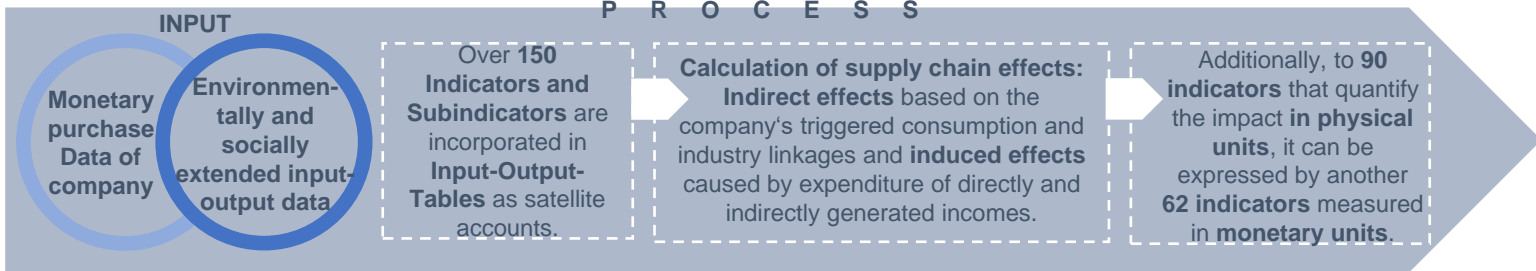
Antonia Quell

Background and aim

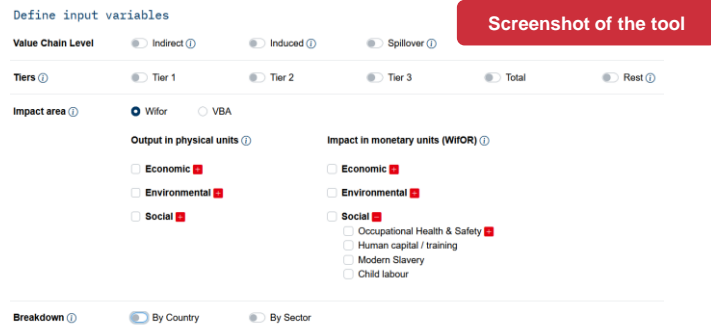


- ▶ **Problem:** Data collection for sustainability analysis often is a difficult and time-intensive task.
- ▶ **Solution:** An application-oriented Tool for streamlined sustainability analysis with monetary purchase data which is fed into an environmentally extended multi-regional input-output model.
- ▶ **Innovation & Digitalization:** Linking data sources and automating sustainability analysis opens new possibilities for building a sustainable future.

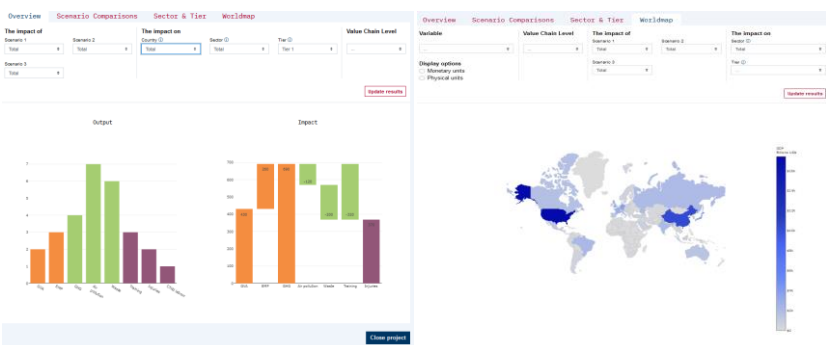
Process and Tool



- ▶ Upstream allocation can be disaggregated into **tiers, 188 countries** and **57 economic sectors** where the impact arises.
- ▶ Our impact analysis tool is based on a unique **hybrid input-output model** combining WIOD, EORA and EXIOBASE, complemented by numerous other satellite accounts based on official statistics, e.g., by ILOSTAT, Eurostat or the OECD.



Results



The result is a **Cradle to gate** assessment considering all **three domains of sustainability**. We consider economic (GDP contribution, job creation, etc.), environmental (GHG, waste, land use, etc.) and social aspects (child labor, training of employees, etc.). This results in both, **footprints with negative effects** and **handprints with positive effects**.

Screenshot of the tool

Contact:
Antonia Quell (Antonia.Quell@wifor.com)

